

### Description:

The Eureka Pontoon Solutions with WATER JET and function can be used in soft and hard layers for the cleaning of rivers and ponds.

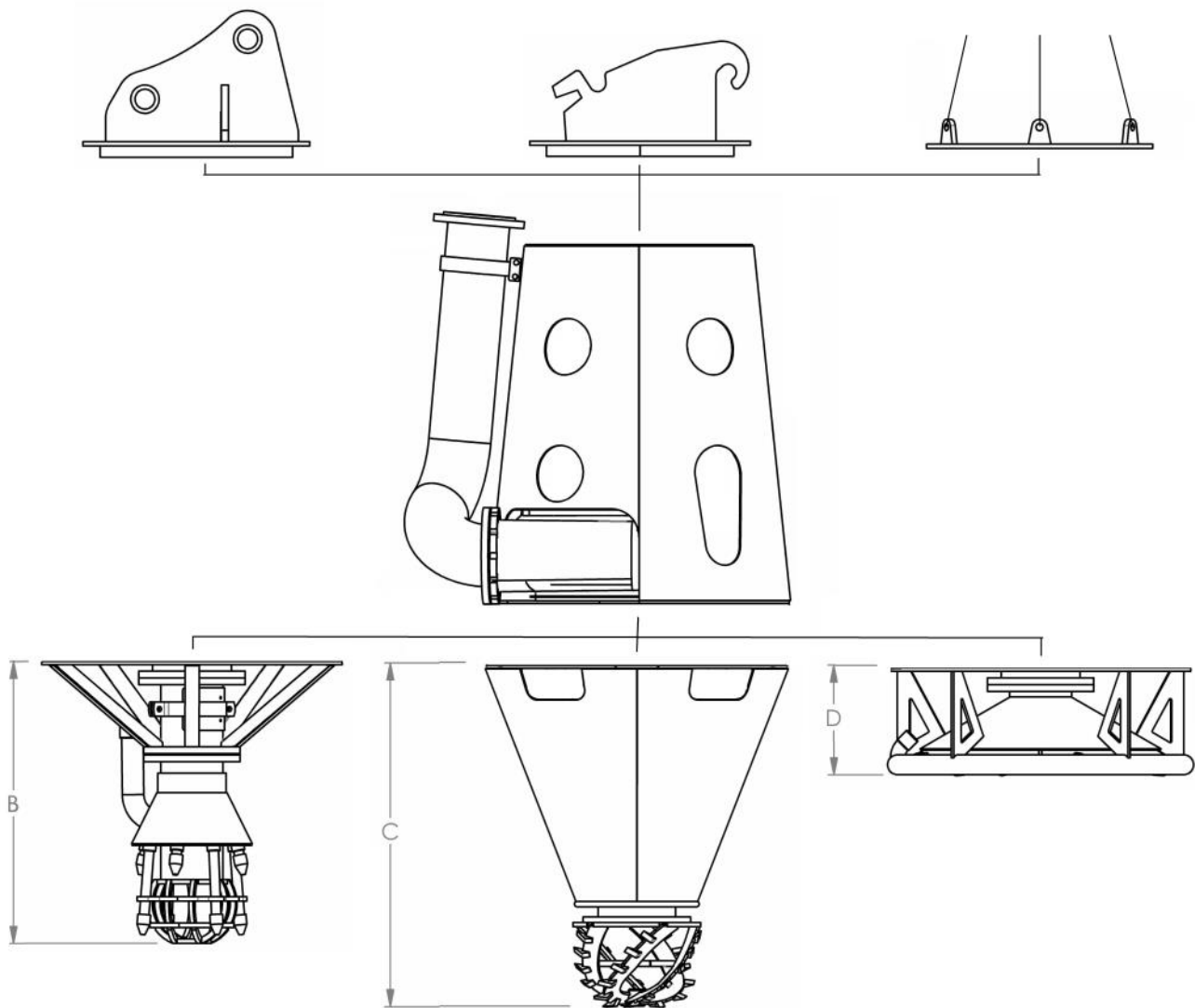
The main advantage is the submersible dredge pump which is located on the excavator to generate the highest efficiency. Another advantage of this excavator solution is the possibility for the changing of the dredge system during work.

So this Excavator Solution is the perfect machine to dredge in an environment with a changing soil.

Dredger range:		Pontoon 150	Pontoon 200	Pontoon 250	Pontoon 300	Pontoon 350	Pontoon 400
Suction depth up to	[m]	50	50	50	50	50	50
Mixture	[m <sup>3</sup> /hr]	450	850	1250	1900	2300	3200
Solid material*	[m <sup>3</sup> /hr]	58	109	160	244	295	411
Solid material*	[ton/hr]	101	191	281	427	517	720
Total power**	[kW]	100	185	255	425	470	590
Suction pipe Ø	[mm]	200	200	250	300	350	400
Delivery pipe Ø	[mm]	150	200	250	300	350	400
Spherical passage	[mm]	100	110	130	150	190	220
Waterjet flow	[m <sup>3</sup> /hr]	100	150	200	250	250	300
Waterjet pressure	[bar]	7	7	7	7	8	8
Mooring cable Ø	[mm]	10	10	10	12	12	14
Mooring winch power	[ton]	1.5	1.5	1.5	1.5	2	2
Draft depth pontoons	[m]	0.5	0.6	0.7	0.8	0.9	1.0
Dry weight	[ton]	24	33	46	55	68	75
Dimensions pontoons	[m]	Custom	Custom	Custom	Custom	Custom	Custom
*Solid material = 70% < 2 mm 20% 2 - 32 mm 10% > 32 mm				**Power = A-rating or Electric			
<b>Options:</b>							
Spuds		Option	Option	Option	Option	Option	Option
Spud carrier		Option	Option	Option	Option	Option	Option
Automatic Dredge control		Option	Option	Option	Option	Option	Option
Cabin AC		Option	Option	Option	Option	Option	Option
Toilet		Option	Option	Option	Option	Option	Option

# Pontoon Solutions

## Main dimensions:



Delivery Pipe



Water Jet Pump



Hydraulic Power Pack



Marsh crawler

# EUREKA

[www.eureka-bv.com](http://www.eureka-bv.com)

Maasstraat 3  
NL-7071 VR ULFT  
The Netherlands

Phone : 0 (031) 315 377 608  
Fax : 0 (031) 315 377 609  
Email : [info@eureka-bv.com](mailto:info@eureka-bv.com)